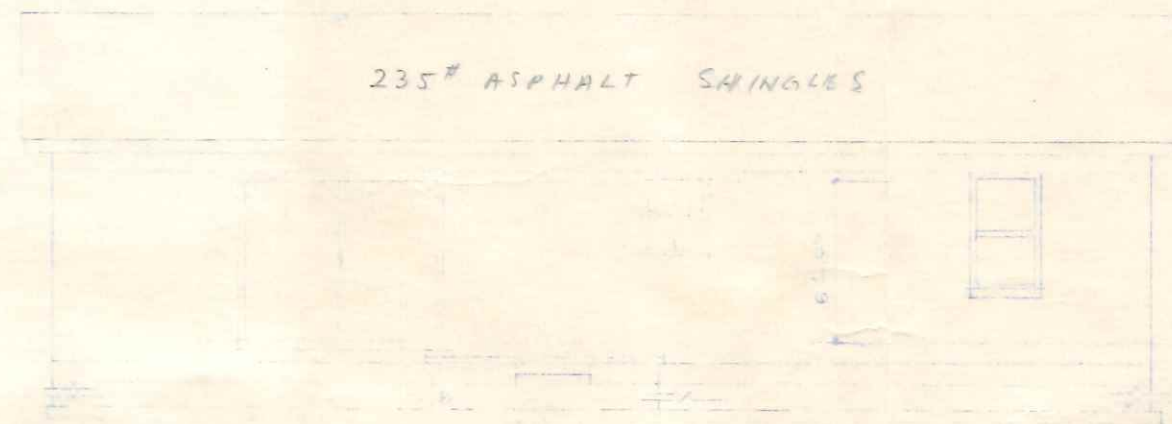




LEFT END



235# ASPHALT SHINGLES

REAR ELEVATION

SCALE 1/2" = 1'-0"

EAST OF WATER

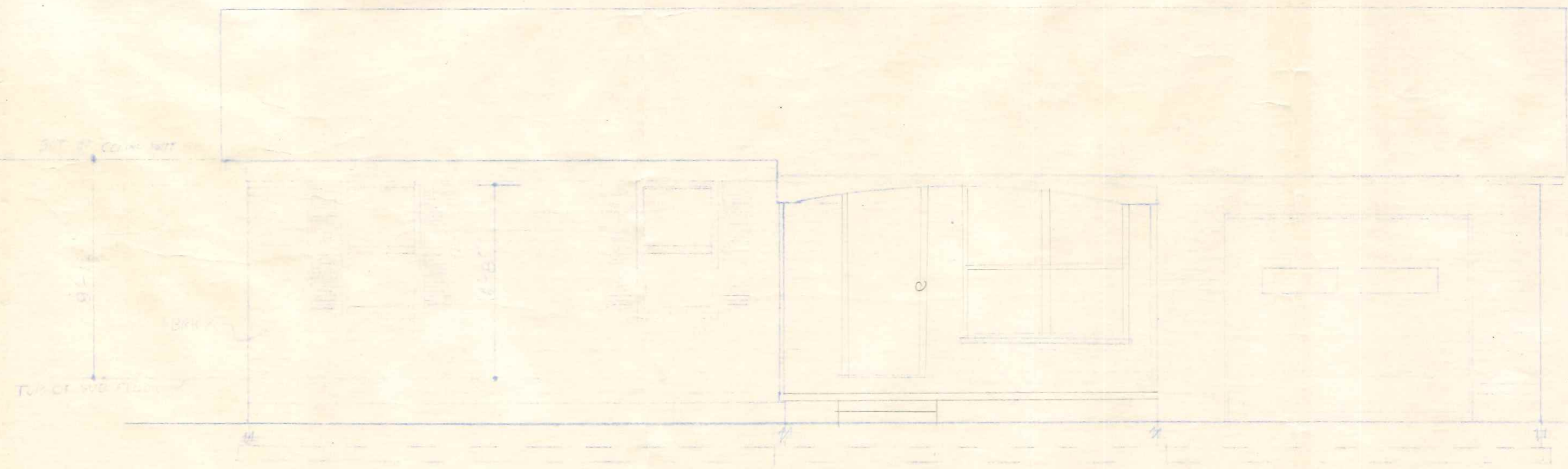
TOP OF GROUND



4/12

40 TO 24 FEET HIGH

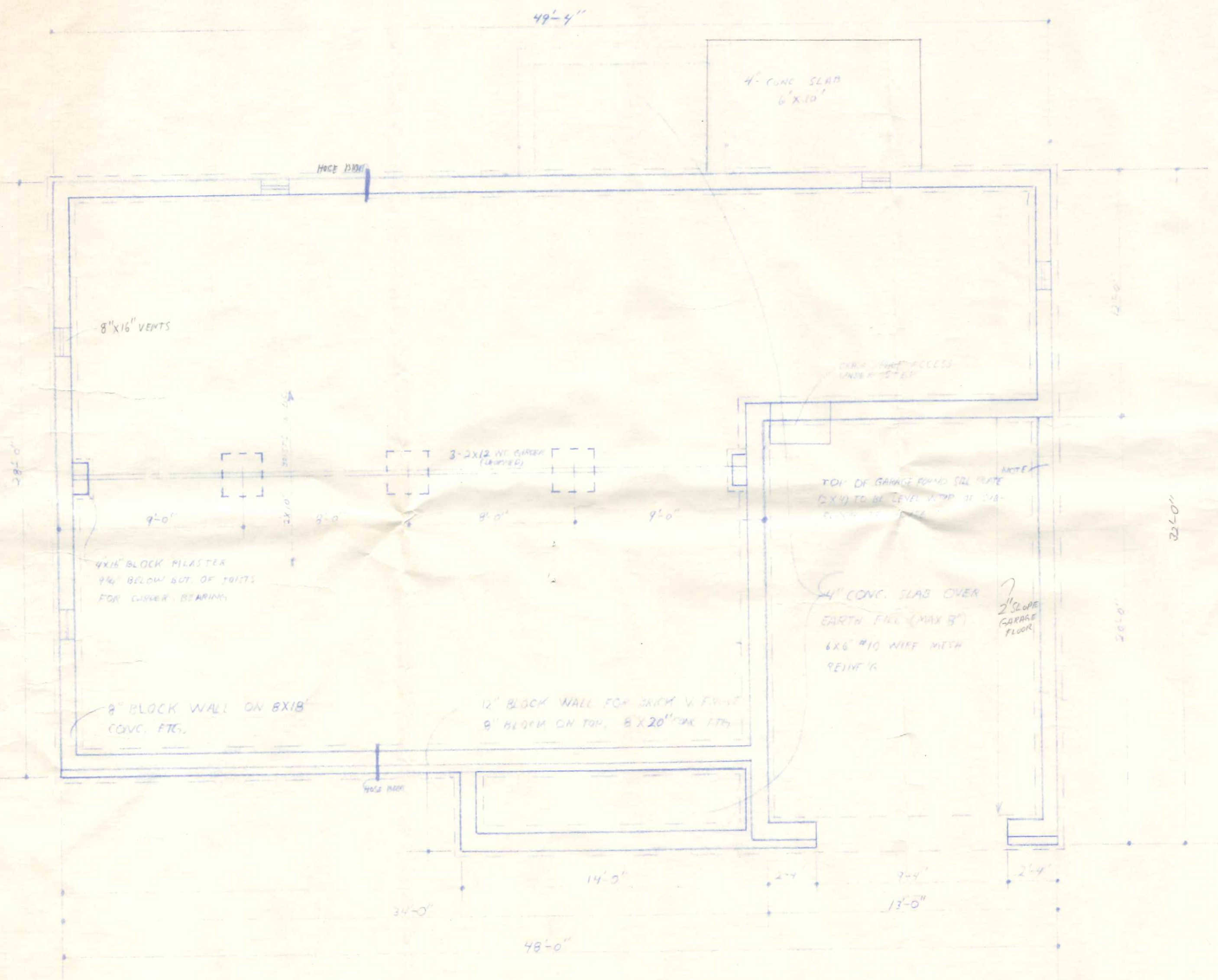
RIGHT END



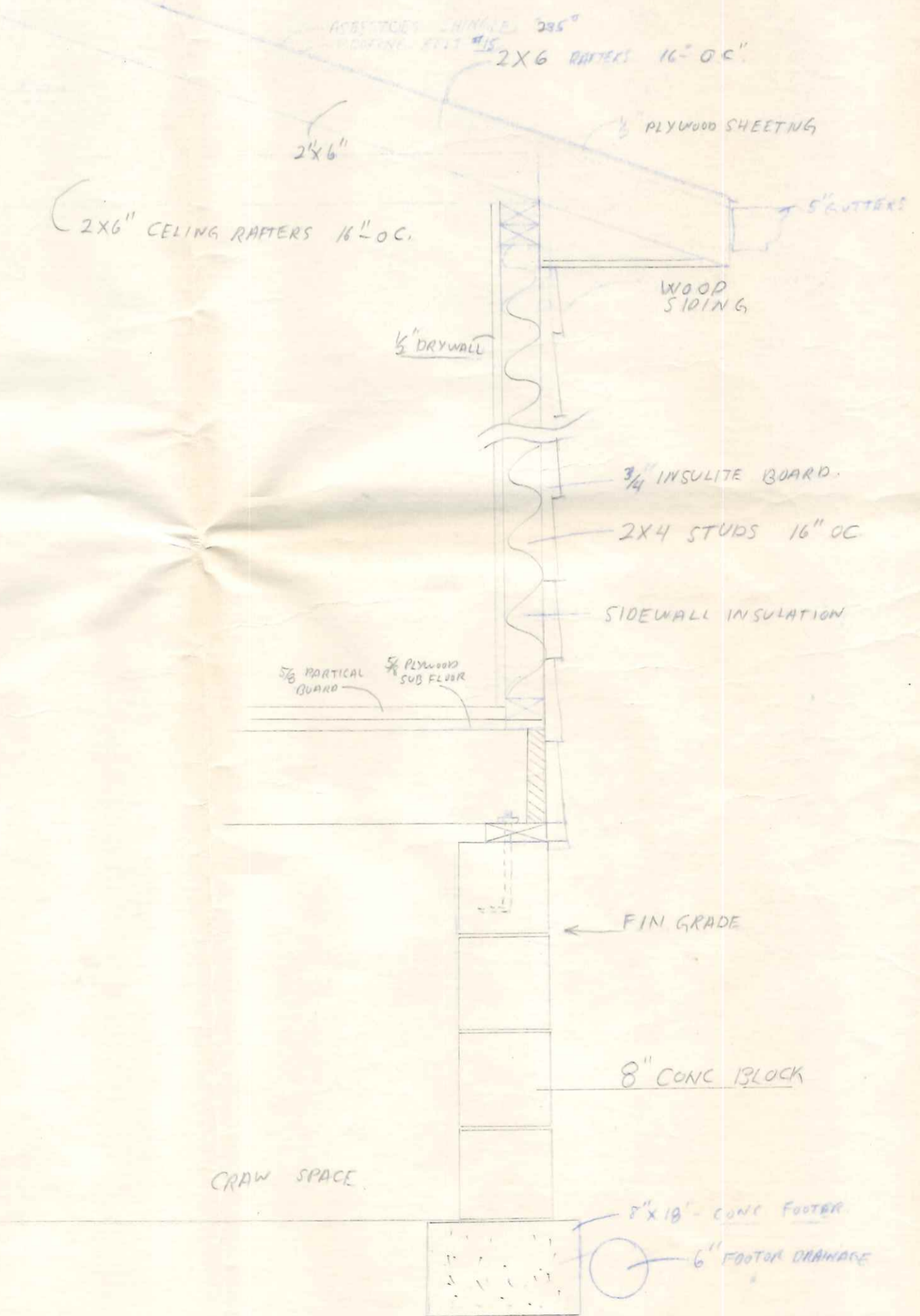
FRONT ELEVATION

SCALE 1/4" = 1'-0"

855 Welsted



FOUNDATION - PLAN

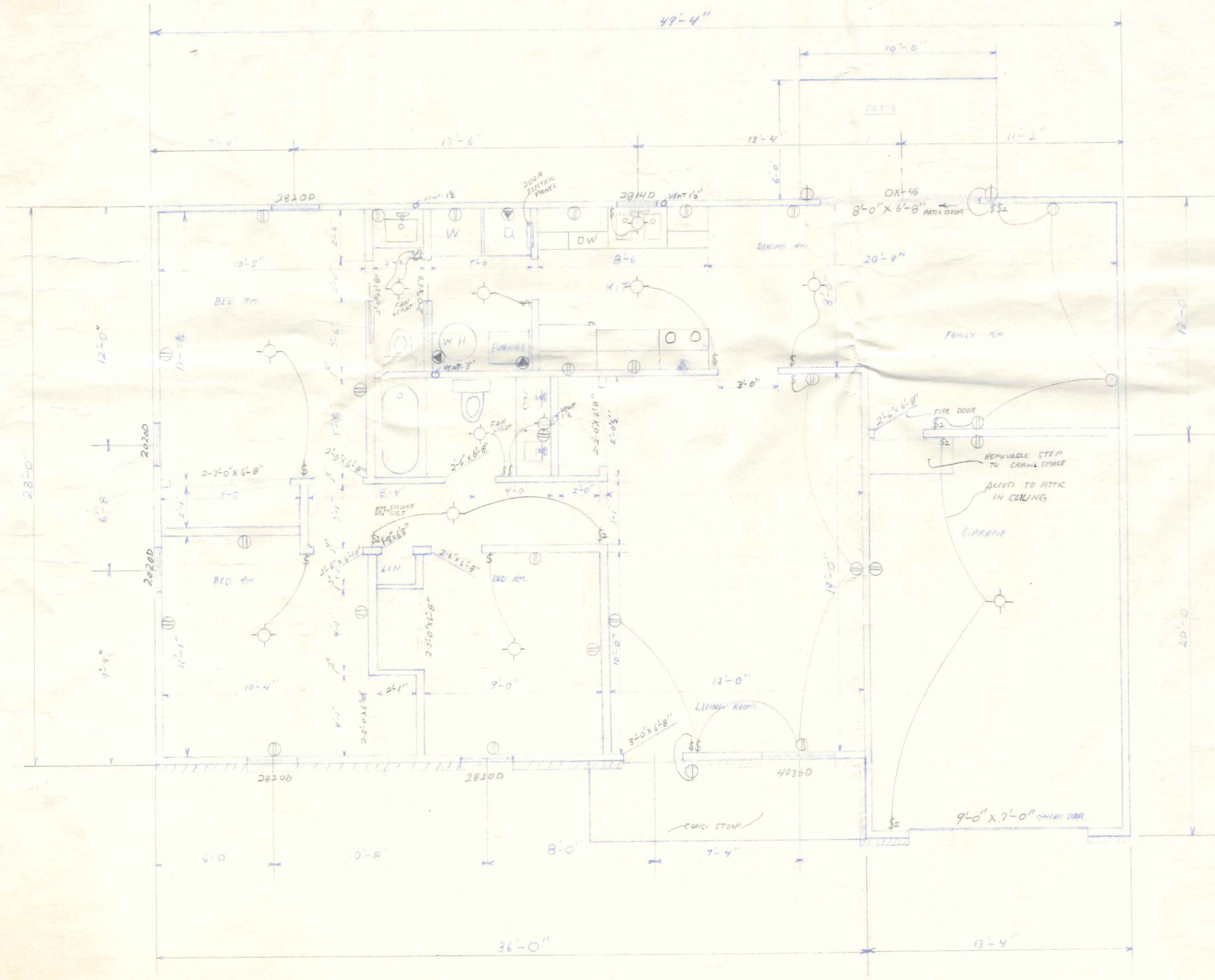


| WINDOW | RAH, OPG. |
|--------|--------------------|
| 4036D | 5'-10" x 7'-10" |
| 2820D | 4'-2" x 2'-10" |
| 2020B | 4'-2" x 2'-2" |
| 2814D | 3'-2" x 2'-10" |
| OX-46 | 6'-10 1/2" x 8'-4" |

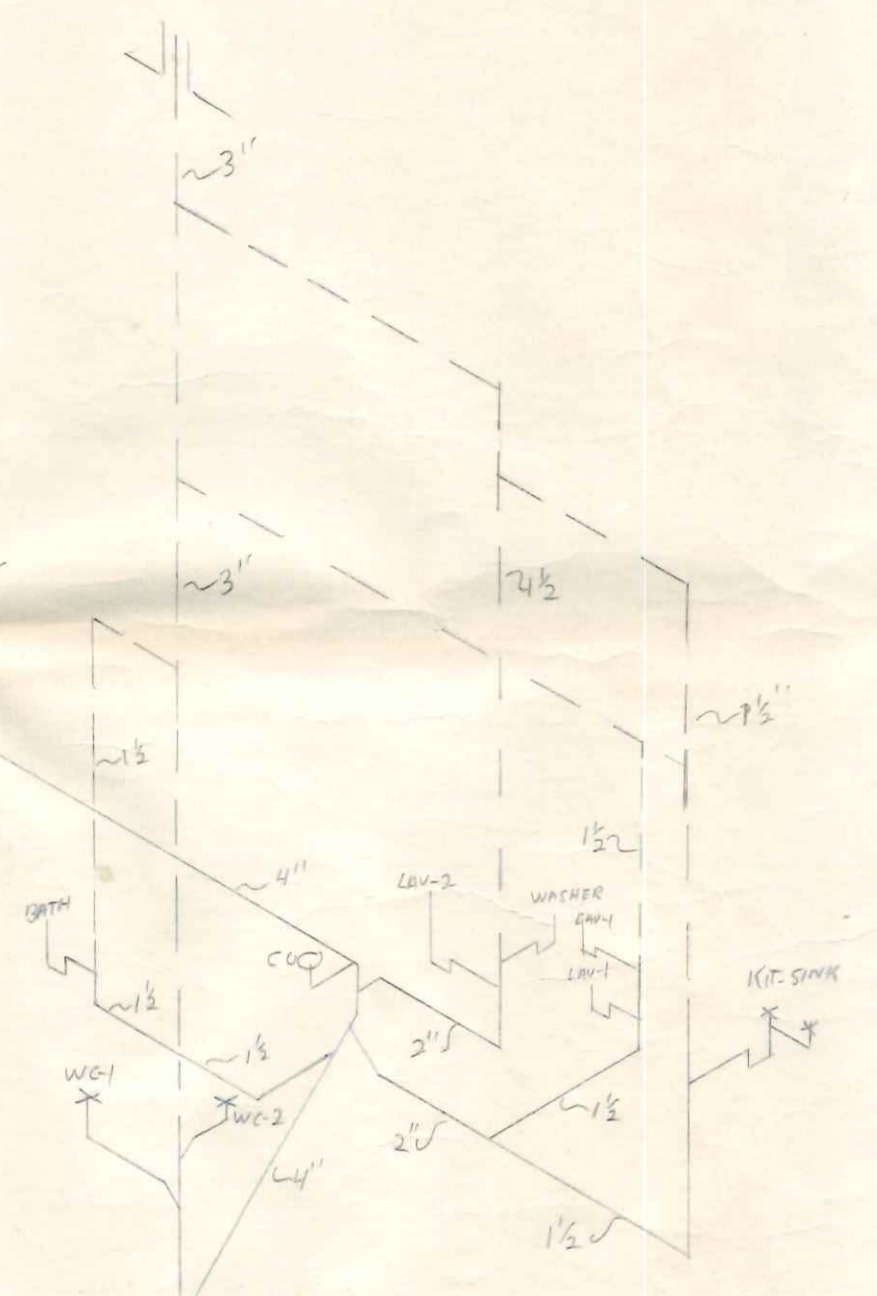
WINDOW SIDE CHART

39050

HEAT LOSS - 35,000 BTU
 TOTAL SUPPLY - 35,000 BTU 12 KW.
 HEAT PUMP - 2 TON - 24,000 BTU.
 LIVING AREA = 1164 FT²
 GARAGE = 260 FT²



FLOOR PLAN
 1/4" = 1'



| FIXTURE | COLD WATER | HOT WATER | WASTE | VENT |
|--------------|------------|-----------|--------|--------|
| WC-1 | 1/2" | 1/2" | 1 1/2" | 3" |
| WC-2 | 1/2" | 1/2" | 1 1/2" | 3" |
| TOI-1 | 1/2" | 1/2" | 1 1/2" | 1 1/2" |
| TOI-2 | 1/2" | 1/2" | 1 1/2" | 1 1/2" |
| WASHER DRYER | 1/2" | 1/2" | 1 1/2" | 1 1/2" |
| BATH TUB | 1/2" | 1/2" | 1 1/2" | 1 1/2" |
| BATH TUB | 1/2" | 1/2" | 1 1/2" | 1 1/2" |

Plumbing layout showing fixtures and piping connections.